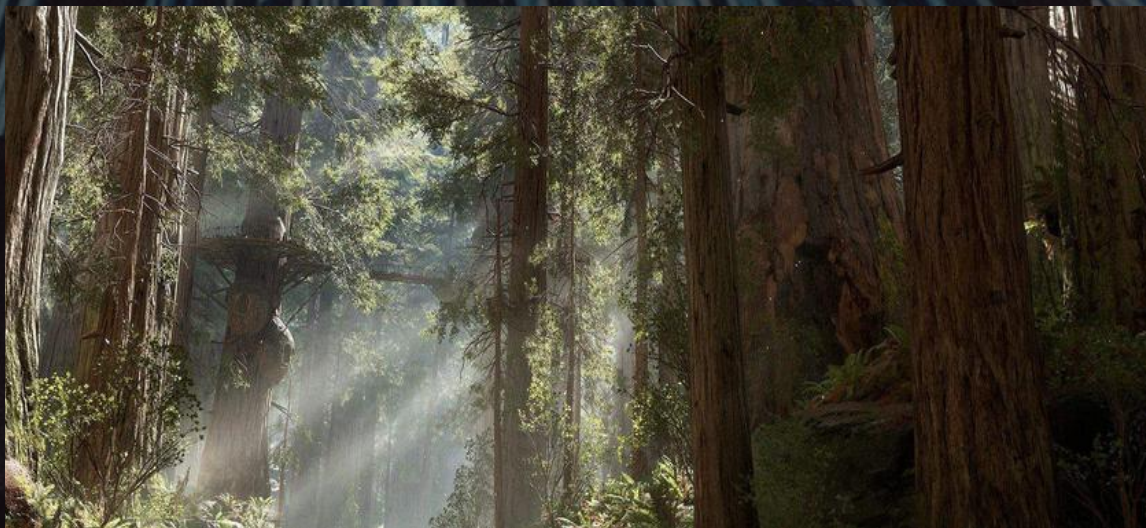
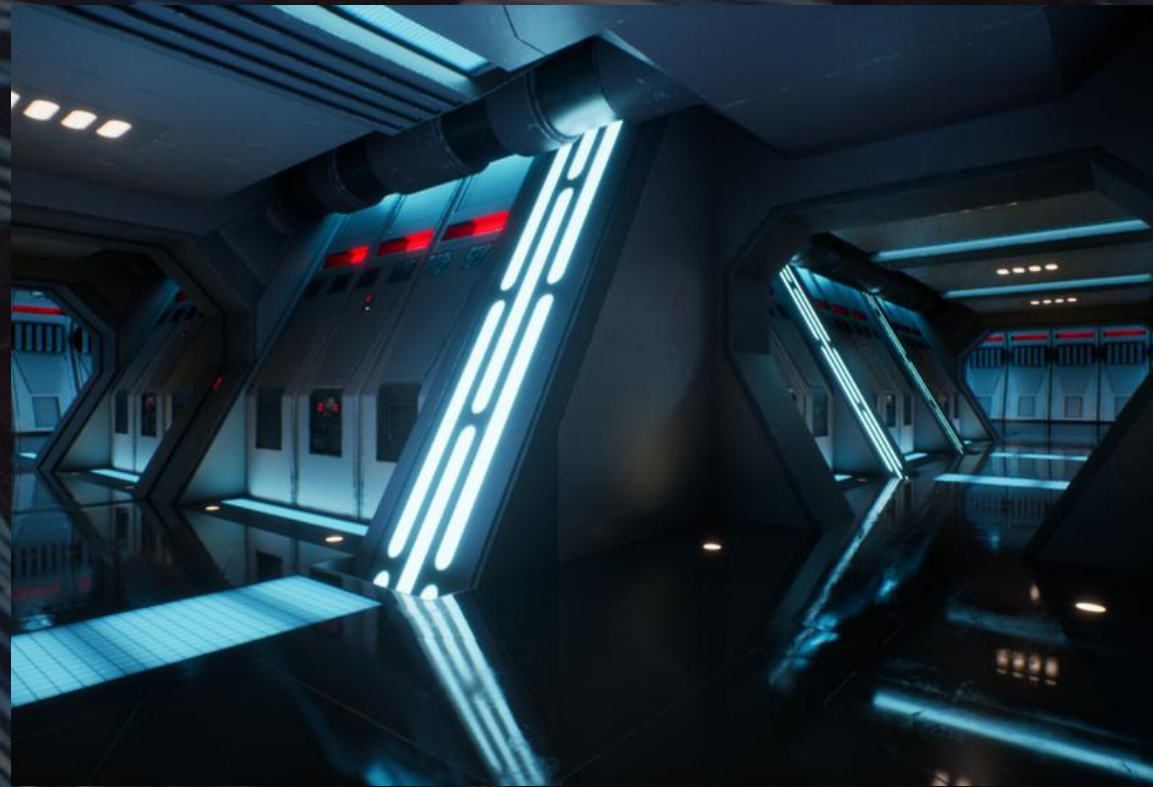


The background of the image is a detailed, low-angle shot of the Millennium Falcon's cockpit from the movie Star Wars: The Force Awakens. The view is from the pilot's perspective, looking out through the large, curved front window. The interior is dark, with various control panels, levers, and buttons visible. The most prominent feature is the large, circular viewport in the center, which shows a bright, starry space scene. The cockpit's structure is made of dark, metallic-looking materials with some glowing blue and red lights. The overall atmosphere is futuristic and immersive.

PHOTOSHOOT PLANNING

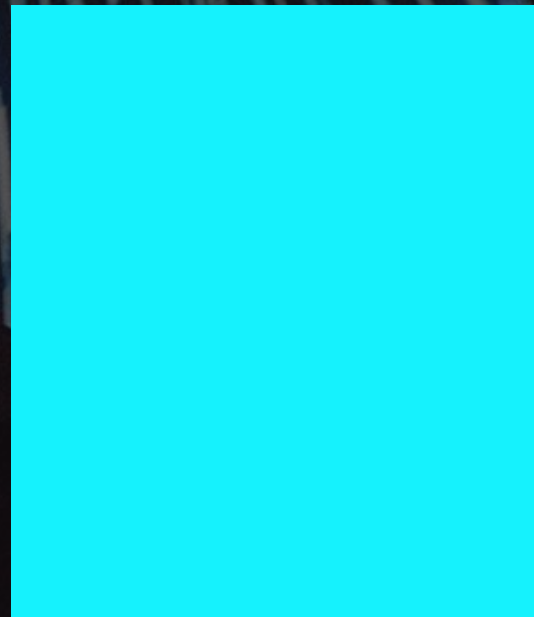
MAY THE 4TH



PLANETS/SHIP

COLORS

Based on the planets, jedi robes and sabers





LIGHTING INSPO

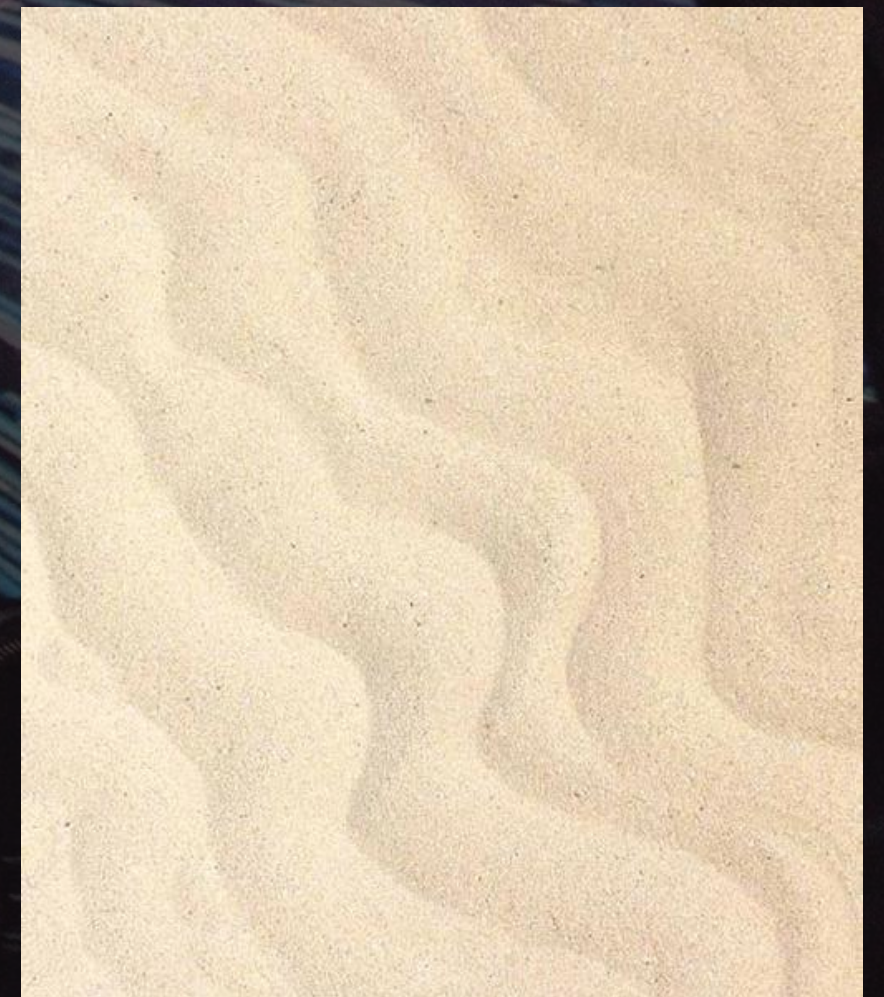
We have a dark side and light side option. For the dark side I'm thinking low light with some soft spotlights to mimic the interior of the ships. Maybe some background red lights for Sith sabers.

For light side I'm thinking more of Tatooine/Batuu with the harsh sunlight of the sunset. Can you use the small colored lights to represent sabers.



BACKDROPS

glass for the “floor”

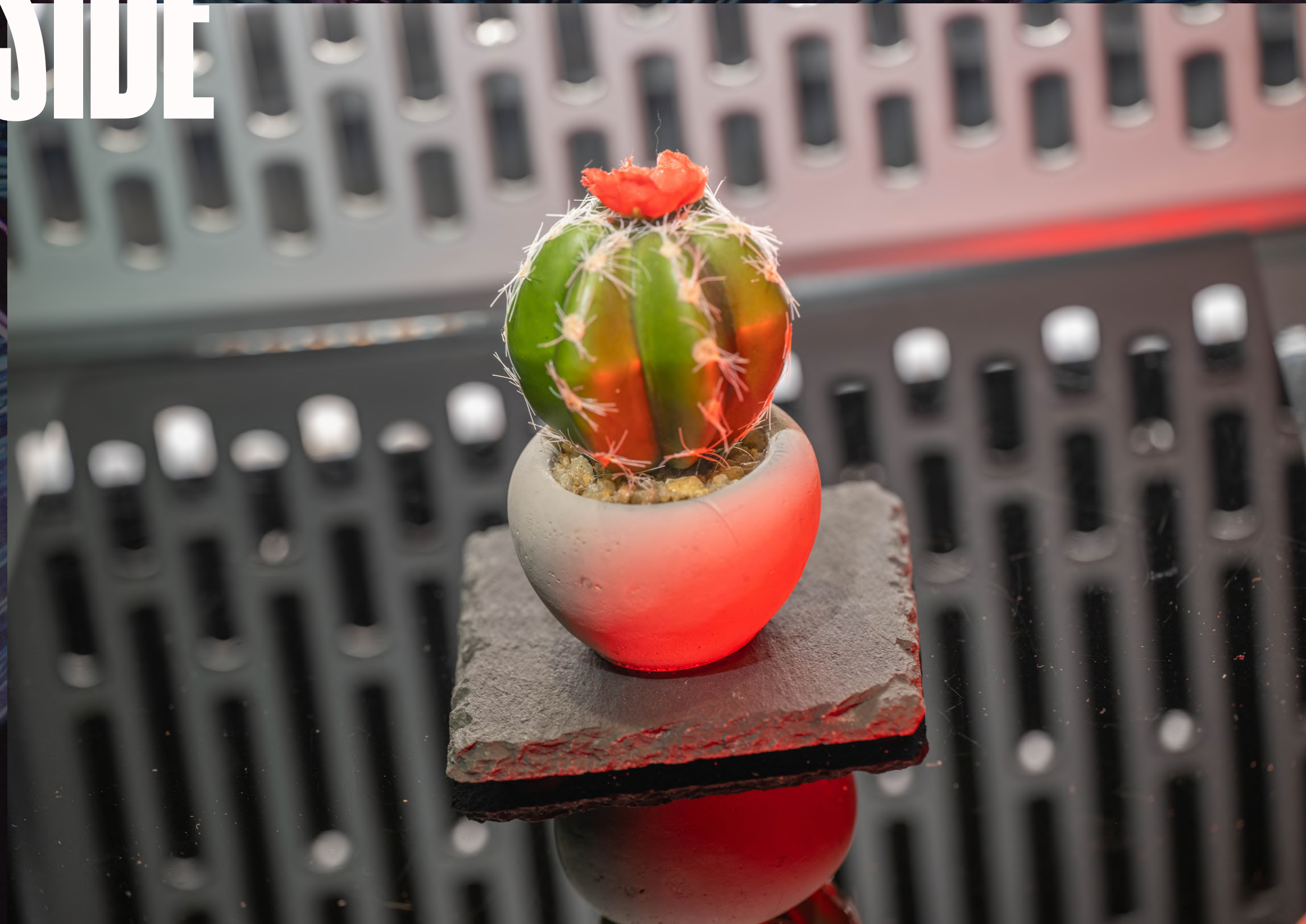


OTHER OPTIONS

Other options would be more greenery and grass to represent endor and kashykk, depending on the item. To bring in the other colors seen in star wars we can use napkins that match. For example using the Tatooine set up, but adding a blue to represent Naboo. Or using the Dark Side set up and adding a red napkin to represent Darth Maul.



DARK SIDE



DARK SIDE



LIGHT SIDE

